



LEASOWE WALL

ASSEMBLY AND MOUNTING INSTRUCTIONS

MB-1900

GENERAL NOTES

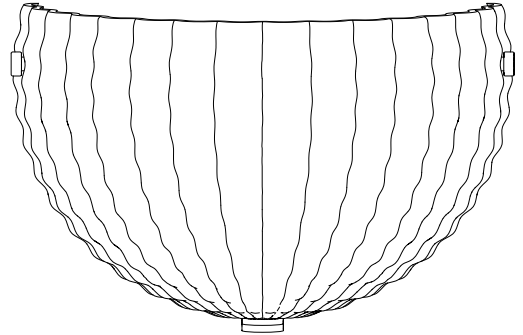
- THIS LUMINAIRE IS SUITED FOR DAMP LOCATIONS.
- THIS LUMINAIRE IS UL LISTED. WHEN INSTALLING LUMINAIRE, CONFORM TO ALL APPLICABLE LOCAL ELECTRICAL CODES, ORDINANCES, AND THE NATIONAL ELECTRICAL CODE (NEC).
- FOR YOUR SAFETY AND PROPER OPERATION OF LUMINAIRE, READ AND UNDERSTAND ALL INSTRUCTIONS COMPLETELY BEFORE COMMENCING INSTALLATION OF THIS LUMINAIRE.
- CAREFULLY UNPACK THE LUMINAIRE AND INSPECT FOR DAMAGE.
- THIS PRODUCT IS RATED FOR ONE 60 WATT MAX, TYPE B BULB.
- SAVE THESE INSTRUCTIONS FOR FUTURE REFERENCE.

CAUTION

THIS PRODUCT SHOULD BE INSTALLED ONLY BY A LICENSED ELECTRICIAN.

WARNING

THE ELECTRICITY MUST BE TURNED OFF AT THE MAIN FUSE BOX BEFORE INSTALLING THIS LUMINAIRE. TURNING POWER OFF USING THE LIGHT SWITCH MAY NOT BE SUFFICIENT TO PREVENT ELECTRICAL SHOCK.



COMPONENTS PROVIDED FOR INSTALLATION

FIXTURE BODY	GLASS	BULB	CAP (X2)
THREADED ROD	JUNCTION BOX SCREW (X2)	WIRE NUT (X2)	



LEASOWE WALL ASSEMBLY AND MOUNTING INSTRUCTIONS

MB-1900

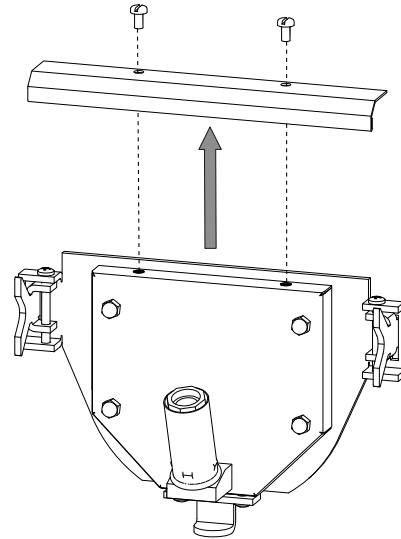
MOUNTING INSTRUCTIONS- ONE PERSON INSTALL

STEP 1

SHUT OFF MAIN ELECTRICAL SUPPLY TO JUNCTION BOX FROM FUSE BOX/CIRCUIT BREAKER. TURNING POWER OFF AT SWITCH IS NOT SUFFICIENT.

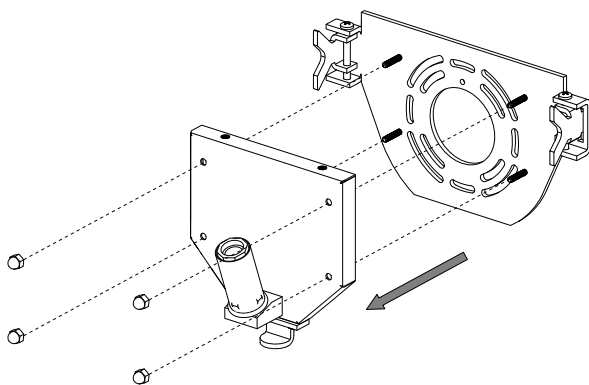
STEP 2

UNSCREW PAN HEAD SCREWS IN TOP OF FIXTURE BODY AND REMOVE ROD COVER. SET ASIDE.



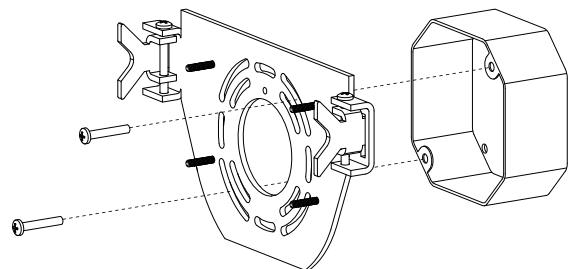
STEP 3

UNSCREW ACORN NUTS AND REMOVE FIXTURE BODY FROM MOUNTING PLATE. SET FIXTURE BODY AND ACORN NUTS ASIDE.



STEP 4

LOCATE JUNCTION BOX. PULL HOUSE SUPPLY CIRCUIT WIRING THROUGH WIRE-WAY OF MOUNTING PLATE AND ATTACH TO JUNCTION BOX USING JUNCTION BOX SCREWS





LEASOWE WALL ASSEMBLY AND MOUNTING INSTRUCTIONS

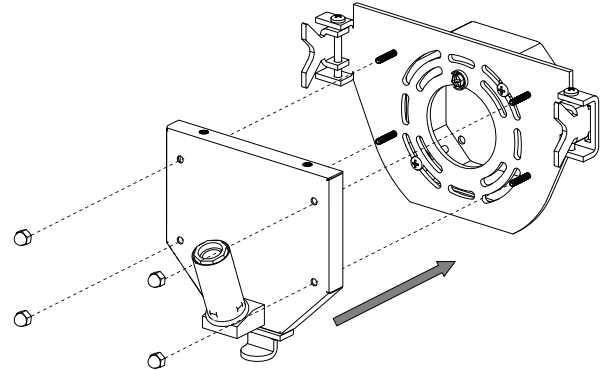
MB-1900

STEP 5

USING WIRE NUTS PROVIDED, MAKE ELECTRICAL CONNECTIONS BY FOLLOWING ELECTRICAL CONFIGURATION TABLE PROVIDED. ENSURE THAT ALL ELECTRICAL CONNECTIONS ARE WRAPPED WITH UL-LISTED ELECTRICAL TAPE.

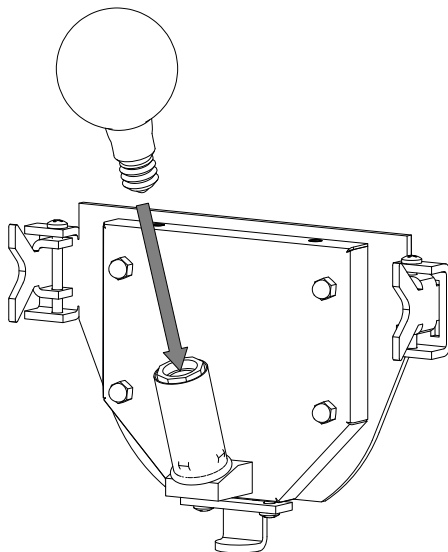
STEP 6

REATTACH FIXTURE BODY TO MOUNTING PLATE WITH ACORN NUTS.



STEP 7

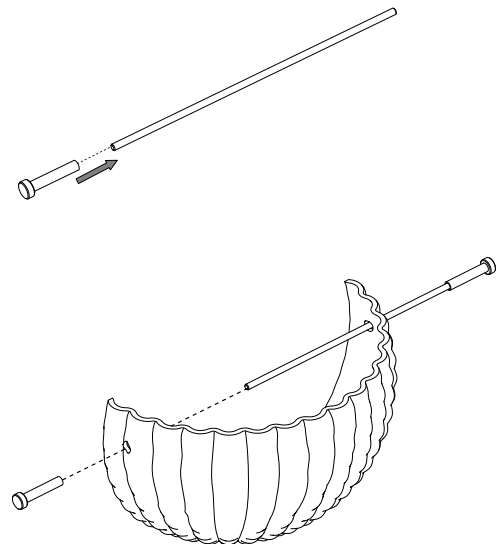
INSTALL BULB. RESTORE POWER TO CIRCUIT. CONFIRM PROPER OPERATION OF LIGHT FIXTURE.



STEP 8

ATTACH ONE CAP TO THREADED ROD.

RUN THREADED ROD THROUGH GLASS AND SECURE OTHER CAP TO THREADED ROD



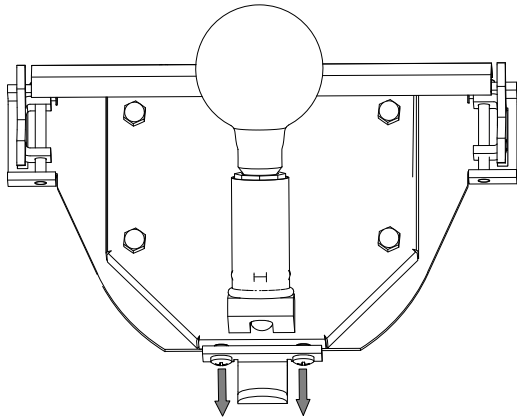


LEASOWE WALL ASSEMBLY AND MOUNTING INSTRUCTIONS

MB-1900

STEP 9

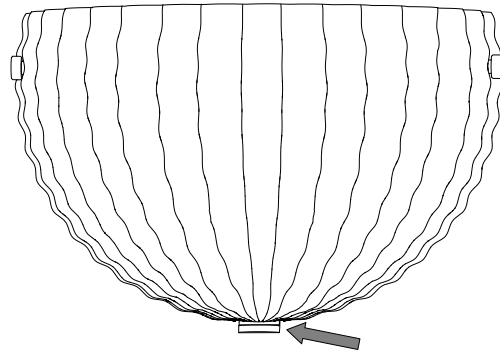
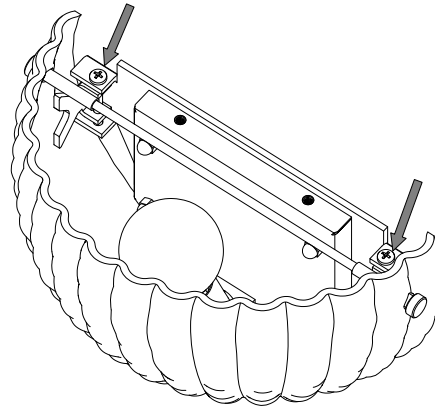
LOOSEN BOTTOM TAB BY UNSCREWING BOTTOM SCREWS A BIT.



STEP 10

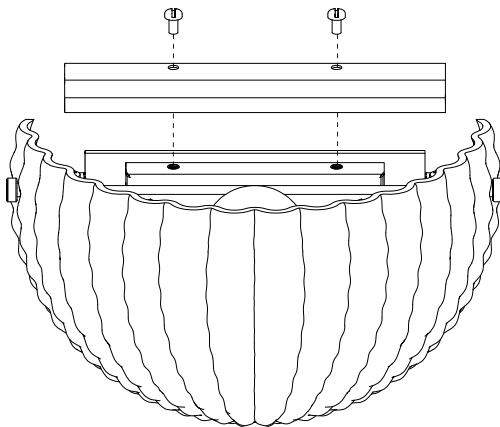
ATTACH BOWL BY SLIPING ROD INTO GROOVE ON MOUNTING PLATE.

LEVEL BOWL BY ADJUSTING PHILIPS HEAD SCREWS ON EITHER SIDE. CHECK FIT AND ADJUST BOTTOM TAB BY RETIGHTENING BOTTOM SCREWS SO THAT IT IS ALMOST TOUCHING BOTTOM OF BOWL



STEP 11

REATTACH ROD COVER WITH FLAT HEAD SCREWS.





LEASOWE WALL

ASSEMBLY AND MOUNTING INSTRUCTIONS

MB-1900

ELECTRICAL CONFIGURATION TABLE

FROM HOME	FROM LUMINAIRE
CONNECT BLACK OR RED (HOT) HOUSE SUPPLY CIRCUIT WIRE TO:	LUMINAIRE ROUND/BLACK WIRE (HOT)
CONNECT WHITE (NEUTRAL) HOUSE SUPPLY CIRCUIT WIRE TO:	LUMINAIRE RIBBED/WHITE WIRE (NEUTRAL)
CONNECT GREEN INSULATED OR BARE COPPER (GROUND -) HOUSE SUPPLY CIRCUIT TO GREEN GROUND SCREW ON MOUNTING PLATE.	

GENERAL NOTE: USE UL LISTED WIRE NUTS FOR THE WIRING CONNECTIONS IN THIS LUMINAIRE. WRAP WIRE NUT CONNECTIONS WITH UL LISTED ELECTRICAL TAPE.

FOR QUESTIONS, PLEASE CONTACT CLIENT SERVICES AT:
843.723.8140 OR INFO@URBANELECTRIC.COM